

Seat Rail Installation Instructions

Tools Required:

1. 6mm, Hex key
2. 15mm wrench or socket
3. 22 mm wrench
4. 16mm open end wrench

Parts Supplied:

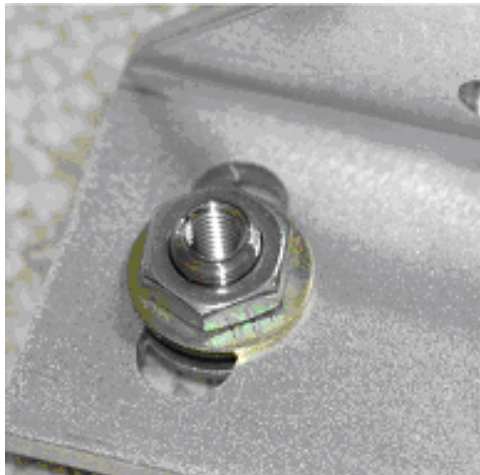
1. 2, Rails
2. 4, uprights
3. 4, M8x30 Socket Head Cap Screws
4. 4, M8 washers
5. 4, M8 very thick washers
6. 16, M10x30mm Button Head Cap Screws
7. 24, M10 flat washers
8. 10, M10 Fender washers
9. 16, M10 Nylock nuts
10. 4, steel cylindrical stud adapters
11. 8, M14 washers
12. 4, M14 jam nuts

a) PLEASE READ AND UNDERSTAND THESE INSTRUCTIONS COMPLETELY BEFORE ATTEMPTING INSTALLATION!

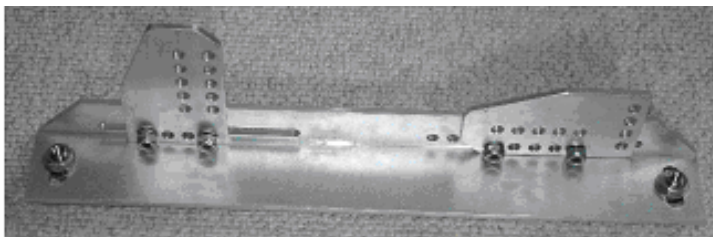
- b) Remove seat nut covers by extracting the plastic pin on the front seat nut covers and then pulling cover towards the front of car.
- c) Remove the 4 seat nuts with the 15mm wrench (or socket).
- d) Remove stock seat, including electrical connector.
- e) Clean the area and place a large washer over the seat stud.
- f) Thread “stud adapters” nuts over seat studs, and tighten lightly with 16mm wrench
- g) Add M14 washer over stud adapter (below)



- h) Repeat step "f" for the other stud adapter nuts.
- i) Assemble as shown in picture below. Do not tighten yet!



- j) Remove rail and install each vertical side to seat using the M8 screws (20mm or 30mm depending on seat type), small washers and thick washers. Use 1 M8 small washer under the screw head and 1 M8 thick washer on the seat side. With the rear uprights, they can be layed down horizontally to lower the rear of seat. (for Kirkey, enlarge holes and use M10x30 hardware) ***Again, do not tighten yet!***



- k) Install in car using M10x30 with 1 small and 1 large fender washer in the front of the front up right to allow for mounting of the sub belts. Use an M10x30 with 1 small and 1 large fender washer under each screw head (the large washer goes towards the aluminum slots) for the rear of the front up right. Use two small M10 washers and M10x30 bolts for positions on the rear up right. For 6 point harnesses, use unused holes towards rear of rail with M10x30 hardware to mount your lap belts. Check seat position for comfort and adjust as desired. (Cross bar for 5 point only, not currently sold)
- l) If you are using a Sparco EVO2 or similar seat that is much wider than the standard EVO, you can use the uprights on the outside of the rails as shown below.



- m) Remove assembly and tighten all screws.
- n) Install lap belt to unused holes *in rail* using M10x30 screws, nuts and washers and factory lap belt with factory hardware.





o) Check fasteners for tightness **after first 1/2 hour.**

p) Win your Event!

Thank you for your order, if there are any problems or questions, please call at 603-682-8073.